

Artwork Design Study

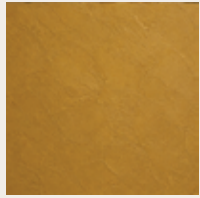
Apollo's Sunroom

Drawn from the Bassin d'Apollon, the Apollo Sunroom translates an artwork into a place. Color, material, accent, and light are composed as a single gesture — a room arranged around the Sun King's triumphant ascension.





APOLLO PALETTE



SOLAR GOLD

#a87424

LRV 21%



LIMESTONE WHITE

#d5cfc1

LRV 63%



GARDEN EVERGREEN

#505639

LRV 9%



SUN-WARMED OAK

#b49872

LRV 33%

THE APOLLO COLORS



#a87424

LRV 21%



#d5cfc1

LRV 63%



#505639

LRV 9%



#b49872

LRV 33%

LRV = Light Reflectance Value # = Hex Color Code

Color & Material Language

A palette drawn from sunlight, gilded sculpture, garden architecture, and the quiet luxury of the sunroom.

The Apollo Sunroom begins with the artwork's central tension: radiant gold against softened earth, formal architecture against living foliage, and mythic grandeur tempered by domestic warmth.

The palette is built from the Bassin d'Apollon itself — the gilded sculpture, pale stone, shadowed greens, and sun-warmed neutral tones that surround the fountain at Versailles.

For collectors and designers, these colors are not decorative accents alone; they establish the emotional temperature of the room. Hammered gold introduces the Sun King's brilliance through reflection and ornament. Cream linens and off-white walls allow the artwork to breathe, preserving a sense of air, light, and architectural calm. Deep evergreen textiles and foliage pull the composition back toward the garden, creating balance between radiance and restraint. White oak grounds the space with warmth, grain, and human touch.

Together, the materials form a sanctuary around the artwork — bright, composed, and quietly theatrical. Each surface is chosen to extend the vision of Apollo's ascent into the room itself, allowing the artwork to become not only an image on the wall, but the organizing source of color, texture, and atmosphere.



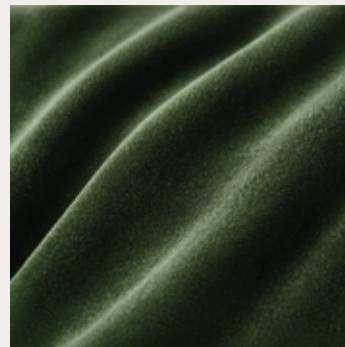
HAMMERED GOLD

Reflective ornament that echoes Apollo's gilded chariot and the fountain's sculptural brilliance.



CREAM LINENS

Soft neutral texture that preserves air, calm, and collector-grade restraint.



GREEN VELVET

A deep botanical counterweight, connecting the room to the formal garden beyond the glass.



WHITE OAK

Natural warmth and grain, grounding the composition beneath the artwork's golden radiance.



APOLLO ACCENTS



HAMMERED GOLD VASE

Reflective sculptural accent echoing Apollo's gilded fountain.



SCULPTURAL SOFA

A quiet horizontal anchor beneath the artwork.



HANGING POTHOS

Cascading greenery that softens formal architecture.



FIDDLE LEAF FIG

A vertical botanical counterpoint in pierced brass.

KELVIN GUIDANCE

- 2700K - Evening warmth and intimacy
- 3000K - Perfect balance for this room
- 3500K - Cleaner daytime support
- Avoid 4000K + Too cold for the concept

Accents & Lighting Composition

Sculptural objects, living foliage, and layered light extend the artwork's golden atmosphere into the room.

The Apollo Sunroom is completed through carefully chosen accents and a lighting strategy that preserves the artwork's radiant authority without overpowering the room. Each object serves the central composition: hammered gold repeats the brilliance of Apollo's chariot, soft upholstery offers repose beneath the image, and living foliage reconnects the interior to the gardens, trees, and reflective waters surrounding the Bassin d'Apollon.

The accents should feel collected rather than staged. A hammered gold vase introduces sculptural reflection. The sofa provides a quiet horizontal anchor beneath the artwork, allowing the eye to rest before returning upward to the fountain. Hanging pothos softens the architecture with movement, while the fiddle leaf fig adds height, shadow, and botanical drama against the arched windows.

Lighting should remain warm, diffused, and architectural. Natural morning light is the emotional foundation of the room, filtered through tall windows and softened by foliage. Supplemental lighting should support this atmosphere with gentle recessed illumination and a controlled wall wash across the artwork. The goal is not theatrical spotlighting, but a luminous interior glow — bright enough to honor the gold, soft enough to preserve intimacy.

For best results, use warm neutral lighting between 2700K and 3000K for evening ambiance, with 3000K to 3500K reserved for cleaner daytime balance. Avoid cool blue-white light, which can flatten the gold tones and weaken the sunroom's warmth. Dimmable fixtures are essential, allowing the room to shift from morning radiance to evening sanctuary.



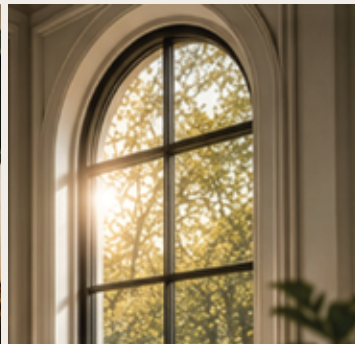
HAMMERED GOLD

Reflective ornament that echoes Apollo's gilded fountain and amplifies warm morning light.



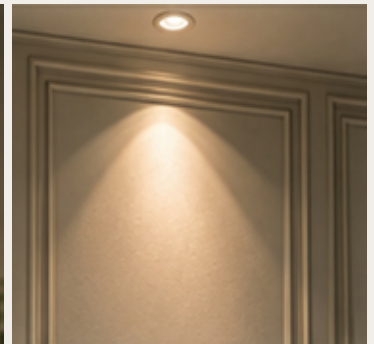
SCULPTURAL SOFA

A calm architectural anchor balancing comfort, symmetry, and collector-grade restraint.



MORNING WINDOW LIGHT

Filtered daylight through arched fenestration creates the room's emotional foundation.



ARCHITECTURAL WALL WASH

A soft even glow that keeps the artwork luminous after sunset without harsh spotlighting.



APOLLO SCALE NOTES

WALL SPAN & BREATHING ROOM

Lateral clearance per side:
Small works: 12–18 in (30–46 cm)
Large works: 18–30+ in (46–76+ cm)

HANG HEIGHT

Lower edge clearance above furniture: 8–12 in (20–30 cm)
Read from seated and standing positions.

FURNITURE & ARTWORK WIDTH

artwork width relative to sofa or console: 70–85%

VIEWING DISTANCE

Close reading: 5–8 ft (1.5–2.4 m)
Full composition: 8–14 ft (2.4–4.3 m)

ROOM SCALE

Small works (32–48 in / 81–122 cm wide):
Wall span: 6 ft (1.8 m) minimum
Ceiling: 8 ft (2.4 m) minimum
Medium works (56–62 in / 142–157 cm wide):
Wall span: 8 ft (2.4 m) minimum
Ceiling: 9 ft (2.7 m) minimum
Large works (70–86 in / 178–218 cm wide):
Wall span: 10–12 ft (3.0–3.7 m) minimum
Ceiling: 9–10 ft (2.7–3.0 m) minimum

Scale & Proportion

A panoramic composition requires the room to travel — horizontally, visually, and architecturally.

Apollo's chariot rises from the water while the eye moves outward across the horses, figures, fountain edge, trees, sky, and reflected light. The work asks for lateral room, a considered hang height, and a viewing distance that resolves both the full landscape and the sculptural detail.

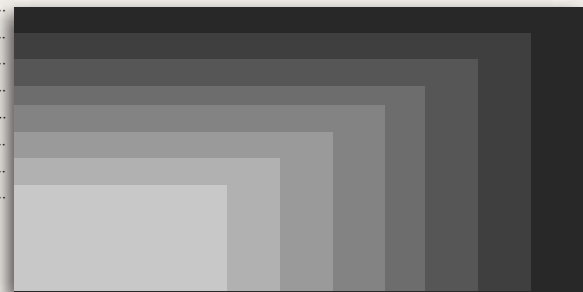
The central action lives in the lower-middle band of the image, which makes hang height especially consequential. Above a sofa or console, the lower edge should sit 8–12 inches above the furniture, allowing the piece to read from both seated and standing positions without crowding the room.

Furniture relationships follow a simple proportion: the artwork should occupy roughly 70–85% of the sofa or console width below it. Smaller sizes bring intimacy and precision; larger sizes become architectural, transforming the room through scale, reflection, and presence. Allow generous lateral clearance so the panorama can breathe — 12–18 inches per side for smaller works, 18–30 inches or more for large-format installations.

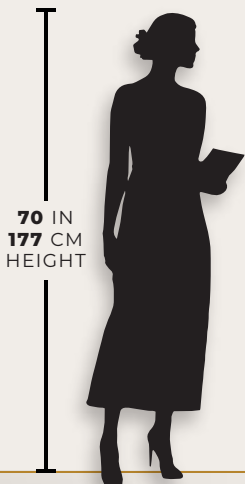
Viewing distance should permit two experiences: the full procession read from across the room, and the sculptural detail resolved at closer range. Medium sizes reward viewing from 5–8 feet; large-format installations open at 8–14 feet or more. At the right scale, the work does not overwhelm the room — it becomes its organizing architecture.

PANORAMIC 2:1 ASPECT RATIO

- 86 x 43 in - 218 x 109 cm
- 78 x 39 in - 198 x 99 cm
- 70 x 35 in - 178 x 89 cm
- 62 x 31 in - 157 x 79 cm
- 56 x 28 in - 142 x 71 cm
- 48 x 24 in - 122 x 61 cm
- 40 x 20 in - 102 x 51 cm
- 32 x 16 in - 81 x 41 cm



9 FT
2.7 M
WALL
HEIGHT



70 IN
177 CM
HEIGHT

- 32 x 16 in / 81 x 41 cm
- 40 x 20 in / 102 x 51 cm
- 48 x 24 in / 122 x 61 cm
- 56 x 28 in / 142 x 71 cm
- 62 x 31 in / 157 x 79 cm
- 70 x 35 in / 178 x 89 cm
- 78 x 39 in / 198 x 99 cm
- 86 x 43 in / 218 x 109 cm



APOLLO MATERIAL NOTES



MATERIAL

*Fujiflex Crystal Archive
Silver halide on chemically inert
PET base*

BASE



*175-micron polyester (PET)
Dimensional stability across
all formats*

PROCESSING



*Digital laser scanning exposure
Professional RA-4 chemical process*

ARCHIVAL TECHNOLOGY



*ARR and NLS chemistry
RA-4 archival processing
White Enhancing (WE) technology*

LONGEVITY



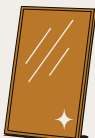
*100+ years
Under recommended display conditions
(below 25°C / 77°F / 30–50% humidity)
ISO 3664-2000 viewing compliance*

PRESENTATION



*1.2-inch / 3 cm archival white border
Mounting and framing clearance
built in*

SURFACE



*High Gloss
Mirror-like finish for
absolute clarity*

AUTHENTICATION



*Cryptographic Certificate of
Authenticity
Registered edition #
Single material configuration*

Medium & Method



The work is resolved in both image and medium — what the work is made of is inseparable from what it is.

Every artwork produced by House of Montague is resolved in a single medium. Substrate, surface, and process are not interchangeable variables but constitutive decisions — the medium is the form the work takes in the world. No alternatives are offered. Variation would dilute intention rather than expand it.

In selecting the medium, four conditions proved non-negotiable. Blacks must retain internal structure without collapse, yielding rich tonal depth rather than empty void. Highlights must remain luminous without flattening, preserving dimensional white rather than clipped brightness. Color must resolve accurately under variable light, holding fidelity across gallery illumination and natural daylight. Longevity must be structural, not theoretical — verifiable through material science rather than asserted through marketing.

Fujiflex Crystal Archive on a 175-micron polyester base met every condition. The medium suspends silver halide crystals within gelatin layers, creating the sensation of looking into the artwork rather than at its surface. The polyester base provides dimensional stability, eliminating the rippling and edge distortion common to paper-based media. A high-gloss finish controls environmental light to enhance clarity rather than diffuse it. This is the medium used by museums worldwide; it was selected for the same reasons.

The medium's permanence is structural. ARR and NLS technologies chemically suppress fogging and maintain white purity over time. White Enhancing (WE) technology ensures highlights emerge with purer whiteness and greater clarity. Proprietary X-Coupler chemistry enables the reproduction of subtle tonal nuances, ensuring transitions remain legible and uncompressed. Processing is carried out through professional RA-4 chemistry with digital laser scanning exposure — the standard for archival photographic production.

Every artwork is produced with a precise 1.2-inch (3 cm) archival white border. The margin is not decorative — it is structural, providing visual breathing room, mounting clearance, and the threshold between the artwork and its architectural context. The border ensures the image retains its intended relationship to the wall plane once installed.

Printing and finishing are carried out in exclusive partnership with WhiteWall, a museum-grade laboratory operating under the most exacting archival standards. Their role is not interpretive; it is custodial. Permanence is not a guarantee but an ethical position — the artwork is engineered to be lived with, not optimized for trends. Longevity is not a feature; it is an assumption.





TC MONTAGUE

ARTWORK RESOURCES

Bassin d'Apollon | 2024 *The Île-de-France Collection*

- Artwork Acquisition | Product Page & Editions
- Artwork Discovery | Editorial Article
- Artwork Design Study | This (PDF)
- Material & Method | Production Standards
- Direct Inquiry | inquiries@tcmontague.com

Artwork & Acquisition

May this work bring you the serenity and royal grandeur of Apollo's golden light.

Each work in this collection is a synthesis of history, drama, and light — produced not as a decorative object but as a permanent fixture in a space designed to receive it. The Apollo Sunroom is one such space, imagined through the framework of the preceding pages and resolved in the presence of the artwork itself.

This artwork is offered as an open edition. The decision is deliberate. Value, in my work, does not derive from scarcity — it derives from the enduring resonance of the image and the thoughtful presentation of the artwork in its proper habitat. To restrict the edition would be to restrict the muse. I offer permanence over limitation, and presence over rarity.

Every artwork I produce passes through every stage of its creation in my hands — from the original photographic capture in the gardens of Versailles through the final material decisions described in the preceding pages. When you acquire a work, you become its custodian. I remain available for any question about its presentation, its placement, or its care.

What follows in these resources is the path forward — the artwork itself, the editorial that accompanies it, and the direct channels through which we may continue this conversation. I humbly invite you to experience the radiance of your own Apollo Sunroom, where reflection unfolds in the presence of the radiant Bassin d'Apollon | 2024.



Medium: Fujiflex Crystal Archive | *Support:* 175µm PET Base | *Finish:* High Gloss

Presentation: 1.2" · 3 cm White Border | *Longevity:* Museum-Grade | *Authentication:* Cryptographic COA